

Third and Incline Creek Watershed Areas

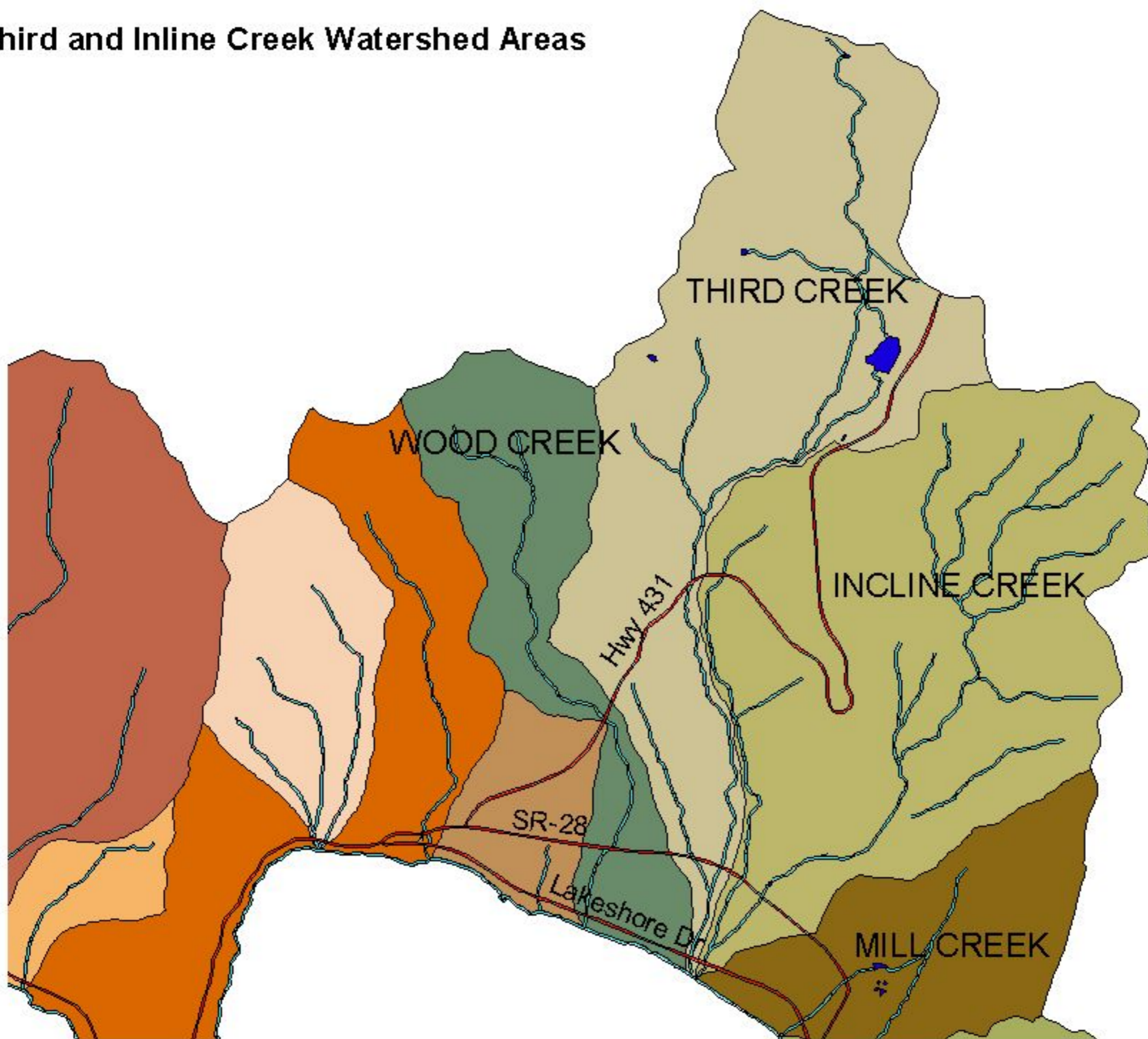
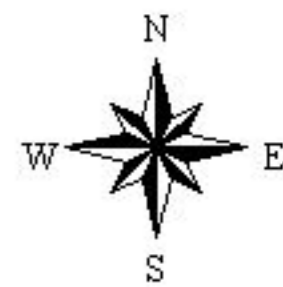


Figure 1. Map showing watershed boundaries for Third and Incline Creeks.



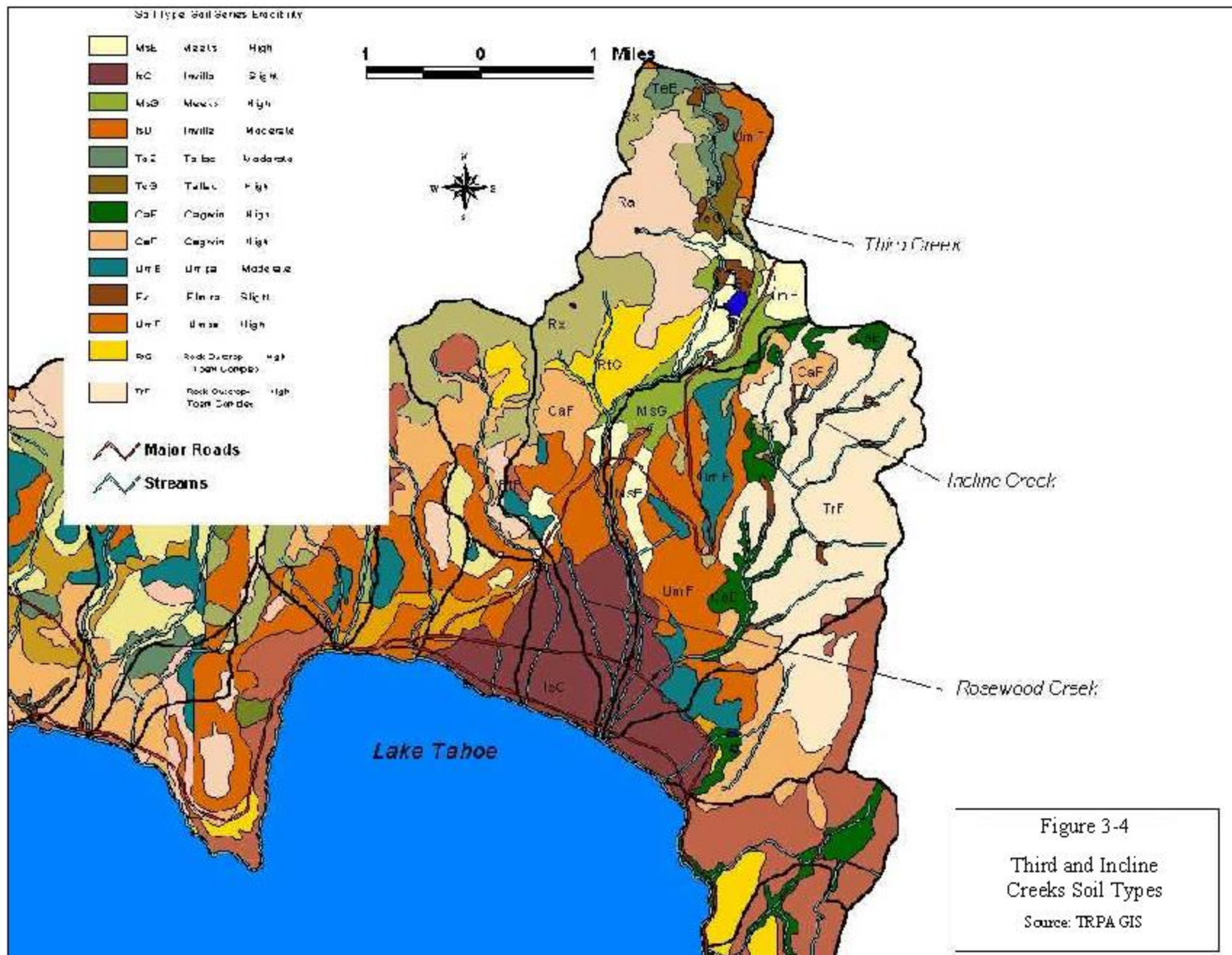


Figure 3-4
Third and Incline
Creeks Soil Types
Source: TRPA GIS



Figure 5-2. Photograph of sand impounded behind a woody debris jam on Third Creek. This site is located about 600 ft downstream of Incline Way near station 18+50.



Figure 5-3. Bank undercutting to a depth of 5ft on Third Creek (station 12+00).



Figure 5-4. Bank collapse as an integral unit on Third Creek (station 17+74). The Survey rod indicates the new bank angle of repose.



Figure 5-5. Example of streambank erosion caused by foot-traffic along Third Creek (near station 22+00).



Figure 5-7. Entrenched, confined channel with cascade bedform, Third Creek upstream of SR-431 (station 157+00).



Figure 5-8. Shallow landslide on Third Creek upstream of SR 431 (station 150+00).



Figure 5-10. Channel incision and bank erosion on Rosewood Creek. The bank height is over 7 ft about station 52+40.



Figure 5-12. Undercut bank (approximately 1.5 ft) on Rosewood Creek along Village Blvd. Rip-Rap placement on left bank is likely accelerating erosion.



Figure 5-13. Rosewood Creek immediately upstream from Northwood Blvd. Channel is approximately 5 ft wide and 1.5 ft deep.



Figure 5-14. Incline Creek remnant meander channel (near station 30+00).