

**KAHLE WATER QUALITY BASIN IMPLEMENTATION PROJECT
STATELINE, NEVADA**

Nevada Tahoe Conservation District
400 Dorla Ct., PO Box 915
Zephyr Cove, Nevada 89448
(775) 586-1610

The following modifications are hereby made to the Bidding and Contract documents for the above referenced project:

CHANGES TO THE BID DOCUMENTS

ITEM 1: Replace plan sheet D-5 dated March 2018 with plan sheet D-5 dated April 2018 and provided in this addendum. The revised plan sheets contain the following changes:

1. In detail 1/D-5 for the Basin Outlet Structure, Section A-A, the aggregate base (AB) should be placed six inches outside the footprint of all sides of the structure. The extents of the aggregate base hatch have been revised to show this.
2. In detail 1/D-5 for the Basin Outlet Structure, detail for the grate has been added. See "Grate Detail" for additional information.

CLARIFICATION ITEMS

CLARIFICATION ITEM 1: A signed copy of Addendum 2 shall be attached to and submitted with the bid proposal.

CLARIFICATION ITEM 2: A Public Works Identifying Number (PWP Number) has been obtained for this Project. The number is DO-2018-170.

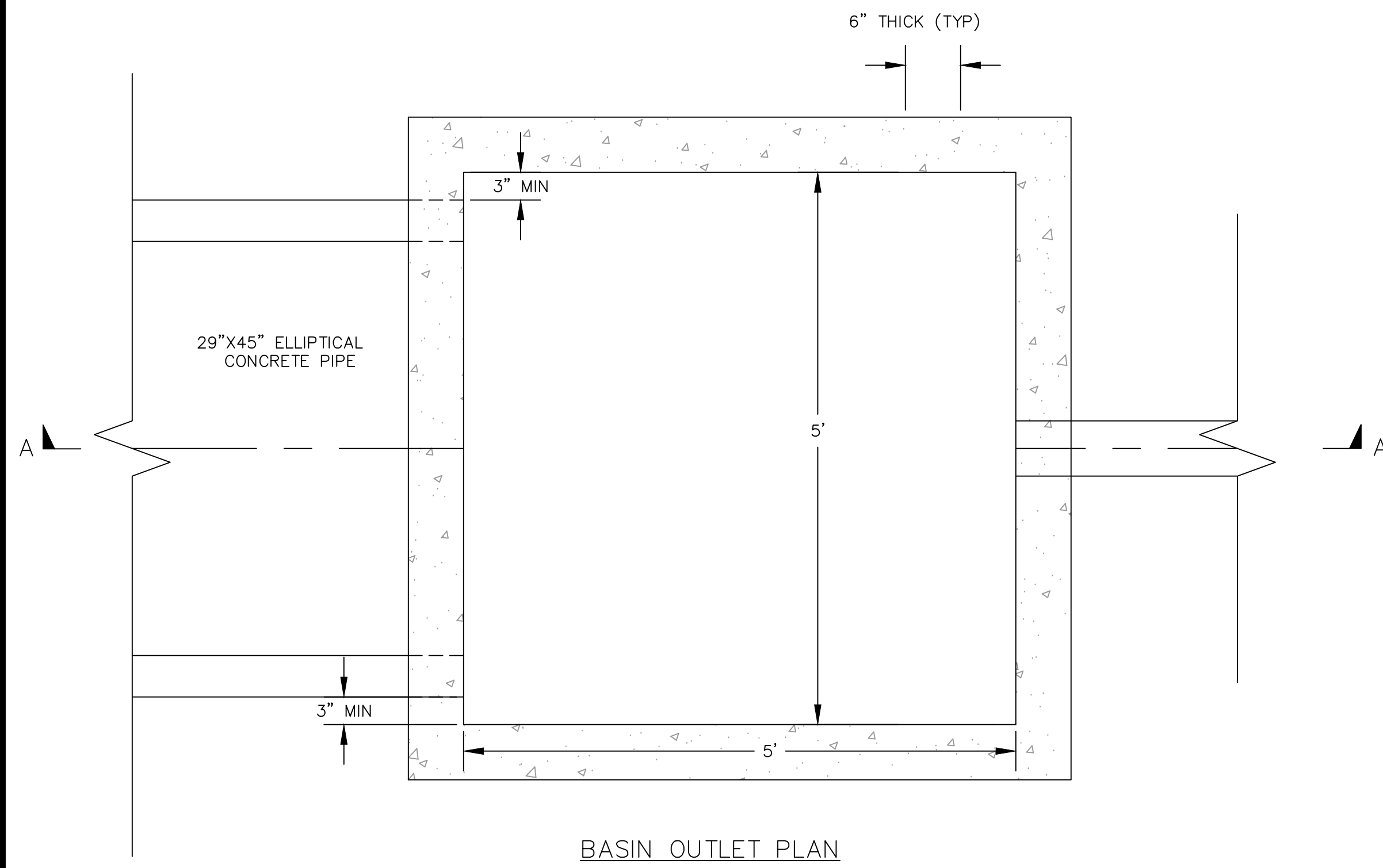
ATTACHMENTS

- Revised Sheet D-5

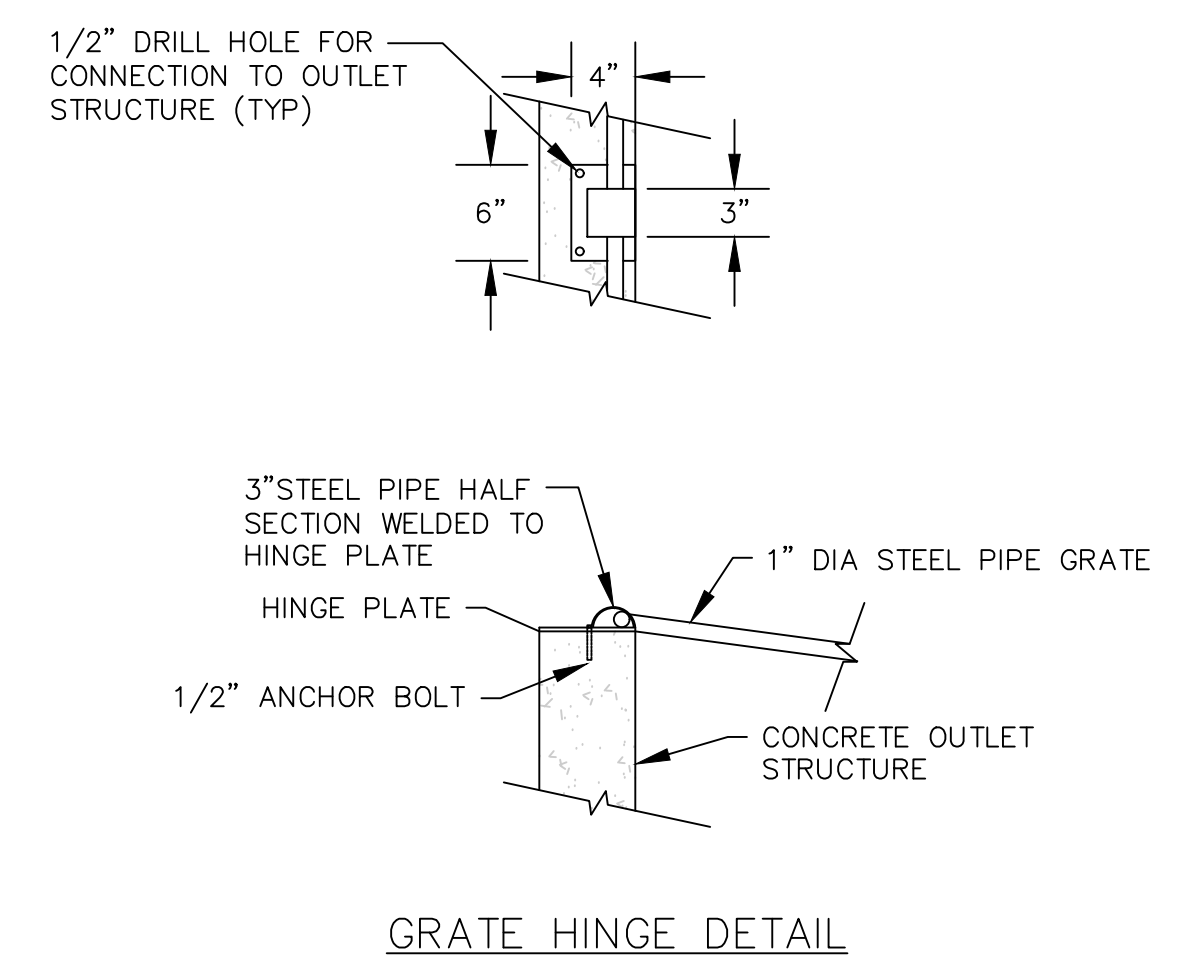
END OF ADDENDUM

Name of Firm: _____ Date: _____

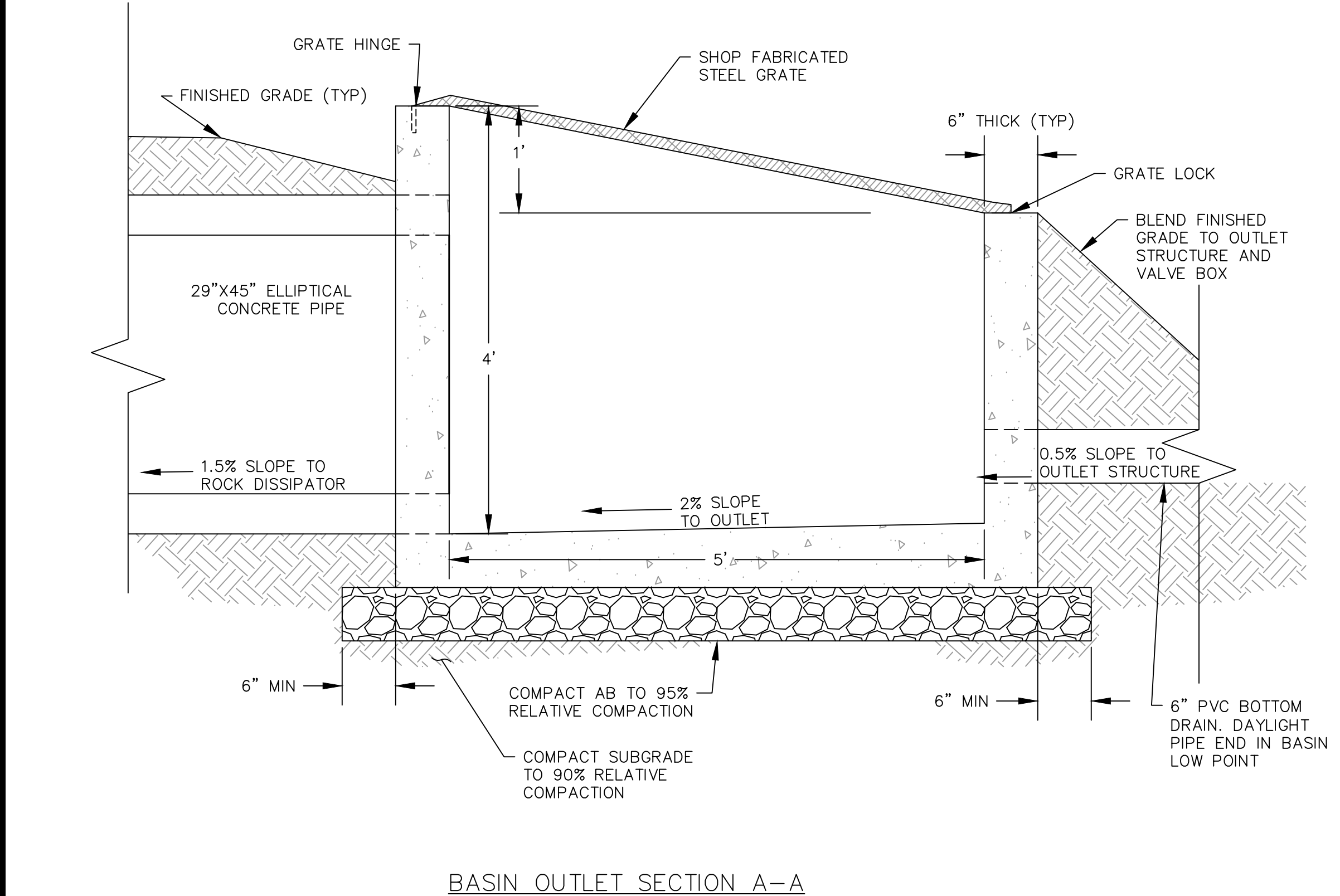
By: _____



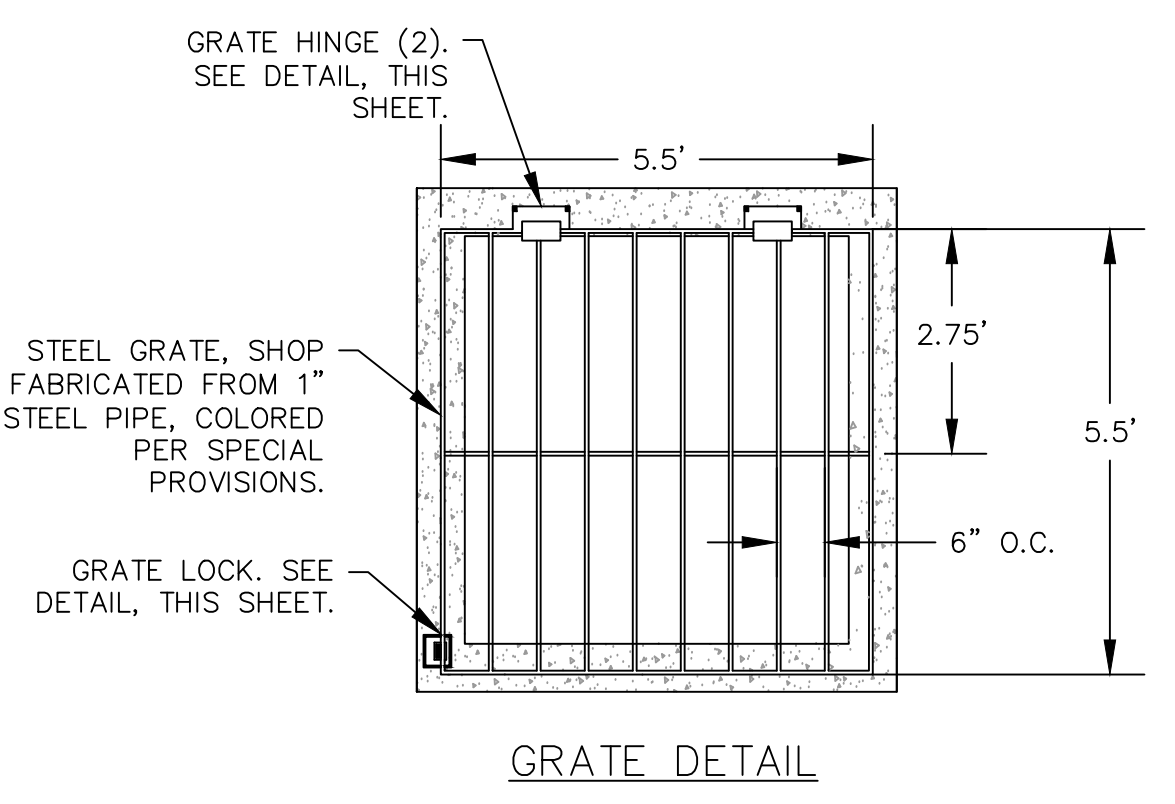
BASIN OUTLET PLAN



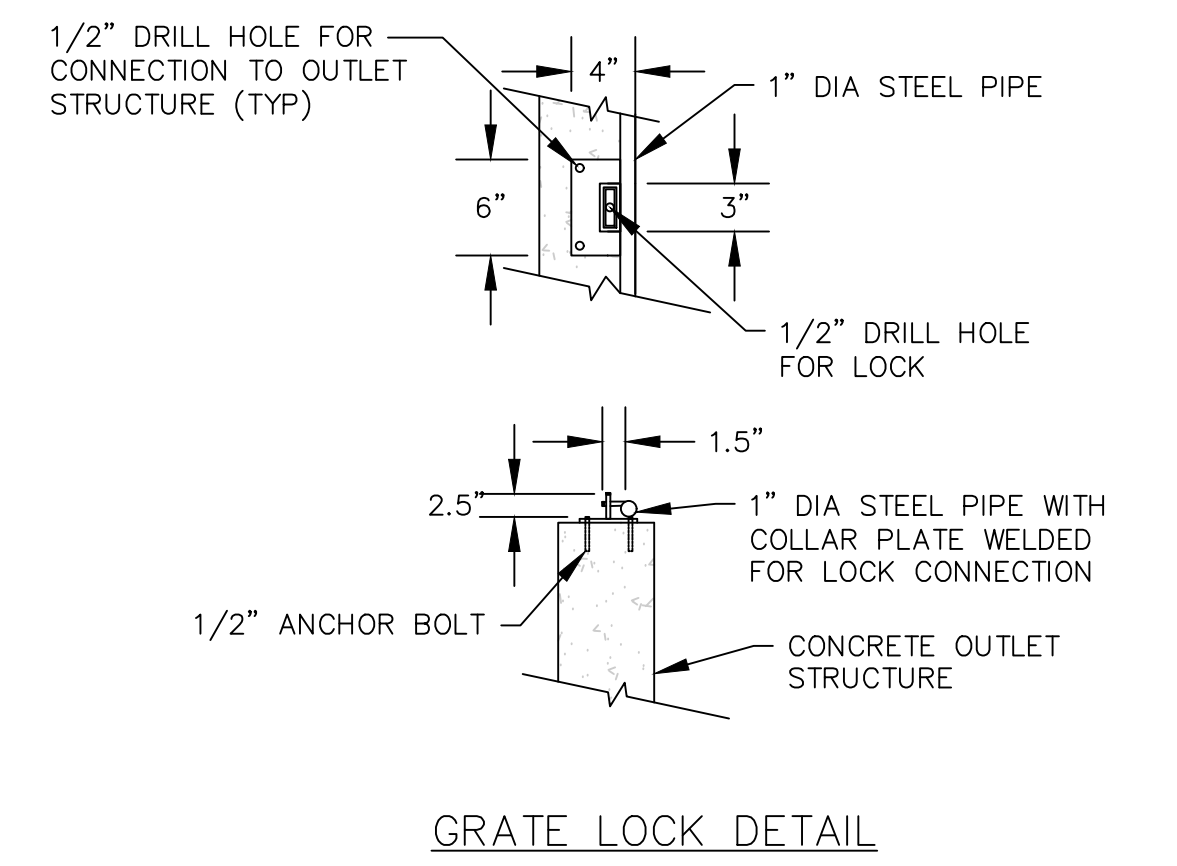
GRATE HINGE DETAIL



BASIN OUTLET SECTION A-A



GRATE DETAIL



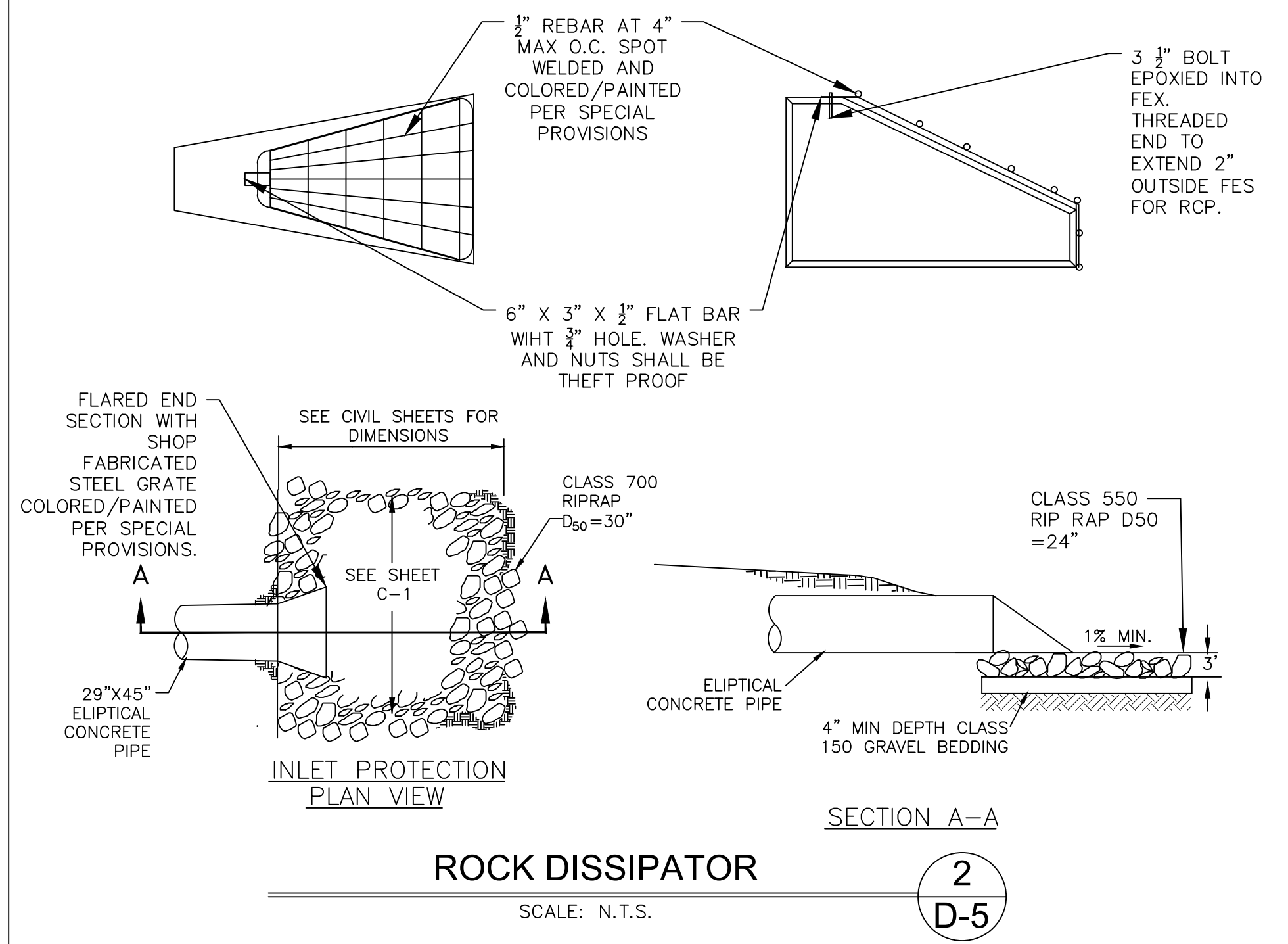
GRATE LOCK DETAIL

- OUTLET STRUCTURE NOTES:**
1. ALL MANHOLES SHALL BE PRECAST UNLESS APPROVAL IS GIVEN BY ENGINEER. HIGH GROUNDWATER CONDITIONS MAY EXIST. ALL MANHOLES MUST HAVE WATERPROOFING MEMBRANE APPLIED: MASTERSSEAL HLM 5000 OR APPROVED EQUAL. SEE STANDARD SPECIFICATION FOR APPLICATION AND CURING METHODS.
 2. ALL CONCRETE SHALL CONFORM TO THE REQUIREMENTS OF SECTION 202 OF THE STANDARD SPECIFICATIONS FOR PUBLIC WORKS CONSTRUCTION FOR CONCRETE EXPOSED TO FREEZE-THAW ENVIRONMENTS.
 3. MANHOLE WITH MORE THAN ONE PIPE-INFLOW, PIPE INVERT ELEVATIONS SHALL BE ≥ 0.1 FOOT ABOVE OUTFLOW PIPE ELEVATION FOR STRAIGHT FLOW THROUGH, OR 0.2 FOOT FOR 90° BEND FLOW THROUGH.
 4. SUBGRADE SHALL BE COMPACTED IN CONFORMANCE WITH SECTION 302 OF THE STANDARD SPECIFICATIONS FOR PUBLIC WORKS CONSTRUCTION.
 5. FOR CONNECTIONS WITH PIPE DIAMETER GREATER THAN 36-INCHES, THE BOOT SHALL NOT BE REQUIRED. ALL PIPE CONNECTIONS GREATER THAN 36-INCH IN DIAMETER SHALL BE GROUTED IN INTERIOR & EXTERIOR OF THE MANHOLE, GROUT SHALL CONFORM TO THE STANDARD SPECIFICATIONS FOR PUBLIC WORKS CONSTRUCTION SECTION 200.04.
 6. WHERE HIGH GROUNDWATER CONDITIONS ARE EXPECTED, INSTALL WATERTIGHT GASKET OR BOOT. ADS WATERSTOP GASKET OR APPROVED EQUAL SHALL BE INSTALLED IN PIPE TO MANHOLE CONNECTIONS PER MANUFACTURER'S RECOMMENDATIONS
 7. GATE VALVE AND VALVE BOX FOR BOTTOM DRAIN LOCATED JUST OUTSIDE OF OUTLET STRUCTURE

BASIN OUTLET STRUCTURE

SCALE: N.T.S.

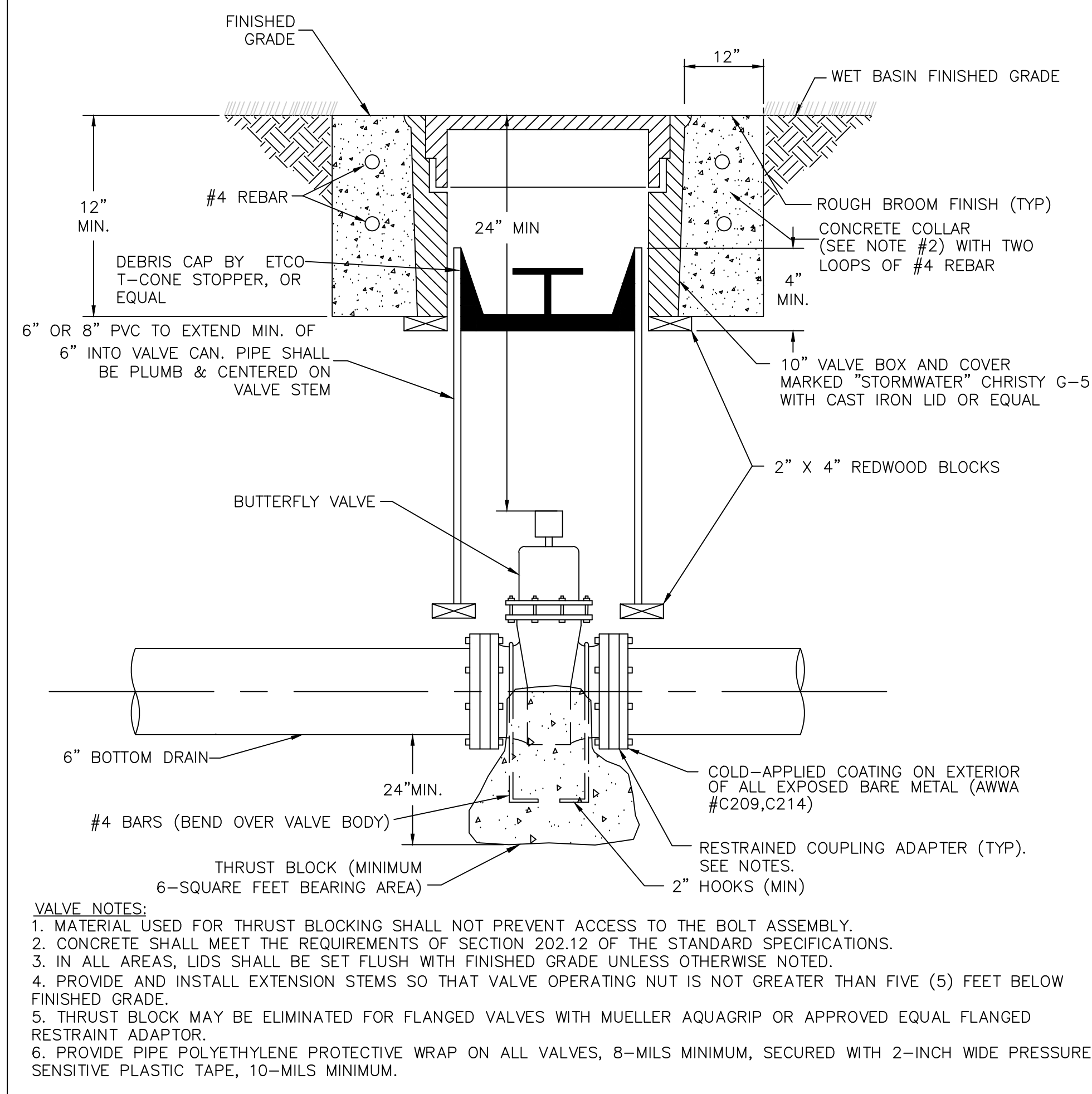
1
D-5



ROCK DISSIPATOR

SCALE: N.T.S.

2
D-5



BOTTOM DRAIN VALVE DETAIL

SCALE: N.T.S.

3
D-5



DETAILS
KAHLE WATER QUALITY BASIN
IMPLEMENTATION

REVISIONS		
NO	DATE	DESCRIPTION
1	4/17/18	ADDENDUM 2

DESIGNED/DRAWN	CFW/MBG
CHECKED	MCK
DATE	APR 2018
SCALE	AS SHOWN
PROJECT	KB

SHEET
D-5
16 of 17