

**PITTMAN TERRACE WATER QUALITY IMPROVEMENT PROJECT  
GLENBROOK, NEVADA**

Nevada Tahoe Conservation District  
400 Dorla Ct., PO Box 915  
Zephyr Cove, Nevada 89448  
(775) 586-1610

---

The following modifications are hereby made to the Bidding and Contract documents for the above referenced project:

**CHANGES TO THE BID DOCUMENTS**

**ITEM 1:** The bid period shall be extended by one (1) calendar day. The first sentence on Page N-1, "Notice to Contractors" and Item 1 on page I-1, "Instructions to Bidders" shall be modified to:

**"Sealed proposals will be received in the office of the Nevada Tahoe Conservation District at 400 Dorla Court, Zephyr Cove, Nevada, until 4:00 P.M. on May 3, 2018 for the "PITTMAN TERRACE WATER QUALITY IMPROVEMENT PROJECT, GLENBROOK, DOUGLAS COUNTY, NEVADA"."**

**ITEM 2:** Replace plan sheets G-1, C-4, R-1, D-2, and D-3 respectively with ADDENDUM 1 plan sheets G-1, C-4, R-1, D-2, and D-3 and provided in this addendum. The revised plan sheets contain the following changes:

1. Sheet G-1: Protection for Staging Area 2 must be per MUTCD code, NDOT standard specification, and the NDOT encroachment permit. Contractor shall submit the proposed protections for Staging Area 2 to NDOT in the traffic control plan to be submitted per Section 150 of the Special Technical Provisions.
2. Sheet C-4: An existing 2" abandoned metal water line is present in the existing Friedhoff Drive ditch. Contractor to remove +/- 100 linear feet of abandoned pipe. Demolition shall be included in the lump sum of Bid Item 4, "Demolition and Existing Infrastructure".
3. Sheet C-4: Block channel quantity has been changed from +/- 100 linear feet to +/- 160 linear feet. The bid schedule has also been amended.
4. Sheet R-1: The rock line channel will not include revegetation treatment. The treatment type 1 area has been changed to show exclusion and the quantity of revegetation amended to +/- 6,150 square feet.
5. Sheet R-1: A call out has been added to the existing private water system where construction and irrigation water may be obtained from the private water purveyor. A second note was added to the sheet concerning the connection as follows: "2. CONSTRUCTION AND IRRIGATION WATER MAY BE OBTAINED WITH COORDINATION WITH PRIVATE WATER PURVEYOR (VANCE AND RORY KEENEY). A HOSE BIB AND METER WOULD NEED TO BE INSTALLED AT SHOWN JUNCTION POINT TO ACCESS WATER. ALL WATER LINE WORK TO BE COMPLETED BY PRIVATE WATER PURVEYOR."
6. Sheet R-1: A third note has been added to the sheet concerning irrigation requirements as follows: "3. IRRIGATION IS ONLY REQUIRED FOR WORK ALONG DOUGLAS BLVD."
7. Sheet D-2: Block Channel detail 2/D-2 replaced the sand layer with filter fabric, which is called out as North America Green P300, Propex Geosynthetics Landlok TRM 450, or approved equal. Clarification has been added to show the concrete edge at a 12" depth. Note 1 has added clarification to the revegetation that blocks are to be filled 70% with topsoil.
8. Sheet D-2: Rock Lined Channel detail 3/D-2 has added rip rap depths to the rock lined channel table and revised the notes to specify the type of filter fabric to place under the channel as North America Green

## ADDENDUM NO. 1, Page 2 of 3

P300, Propex Geosynthetics Landlok TRM 450, or approved equal. The infill type has been clarified as chinking mix.

9. Sheet D-2: Rock Drop Structure detail 4/D-2 has added the type of filter fabric to be used as North America Green P300, Propex Geosynthetics Landlok TRM 450, or approved equal. The class of rip rap used shall be Class 300.
10. Sheet D-3: Retrofit NDOT Infiltration System detail 1/D-3 has been changed to eliminate the modification to the existing CMP and the added drain rock in between the existing DI and sediment cans. The proposed CMP shall be connected with a field joint, continuous weld. Filter fabric was added to wrap the proposed drain rock. The filter fabric shall be 4-ounce, non-woven geotextile.
11. Sheet D-3: Details 2/D-3 and 3/D-3 have been modified to eliminate discrepancies. The Jensen Precast drainage inlet shall be model no, DI243648-4R or approved equal. Perforated HDPE shall be 18" in diameter. Weep holes shall be drilled, one on each side of the drainage inlet. The subgrade shall be 6" AB compacted to 95% relative compaction and extend a minimum of 6" outside of the drainage inlet footprint.
12. Sheet D-3: Detail 4/D-3 has been modified to add 4-ounce, non-woven geotextile fabric as a barrier between the block channel base and the drain rock. Weep holes shall be drilled, one on each side of the drainage inlet. The subgrade shall be 6" AB compacted to 95% relative compaction and extend a minimum of 6" outside of the drainage inlet footprint.

**ITEM 3:** The following language should be added to Section 260.02 of the Special Technical Provisions.

### "Wood Chips

Wood chips to be used in block channel and microbasin shall meet the following specification. Wood chips shall originate in the Tahoe Basin. The wood chips shall be free of rock fines, soil, and other extraneous material. The wood chips shall be stored unprotected outside for at least 6 months, so as to have been subjected to weather and precipitation. Wood chips meeting this specification are available free of charge at the Nevada Tahoe Conservation District at 400 Dorla Court in Zephyr Cove, Nevada. Contractor must coordinate with the Engineer to utilize these wood chips. If the Contractor obtains wood chips from a place other than the Nevada Tahoe Conservation District, a sample of the wood chips shall be submitted to the Engineer ten (10) days prior to expected use for written approval. Sawdust will not be acceptable.

### Compost

Compost to be used in block channel and microbasin shall consist of Full Circle Compost Boost or equivalent. "

**ITEM 4:** The following language shall be added to Section 120.01 of the Special Technical provisions:

"NDOT Encroachment permit requirements for traffic control can be expected to include restrictions for single lane closure during daylight hours to be before June 15<sup>th</sup> or after Labor Day. Restrictions shall also be expected into include no 24-hour lane closure. Protections will need to be put up before and taken down after each work day. Staging Area 2 protections shall be included in the Traffic Control Plan. See Section 150, Traffic Control. The final encroachment permit will dictate restrictions for working in the NDOT right of way."

### **ADDENDUM NO. 1, Page 3 of 3**

**ITEM 5:** A new bid schedule is attached to account for the changes that follow. Bidders are instructed to replace the bid schedule in the Solicitation Documents and Specifications (page P-2) with the ADDENDUM 1 bid schedule (page P-2) attached to this addendum. Bidders should submit their bid using this bid schedule and not the one included in the April 2018 Solicitation Documents and Specifications.

1. Bid Item, 14 "Block Channel" has increased the quantity to 160 linear feet.
2. Bid Item, 21 "Revegetation" has decreased the quantity to 6,150 square feet.

**ITEM 6:** In the Plan Set on Sheet D-1, detail 4/D-1 for the Fiber Roll Silt Barrier, note 1 should be replaced with the following language: "Fiber rolls shall not be made from straw, with the exception of weed-free rice straw. Fiber rolls shall have a minimum weight of 2.5 lbs per linear foot. Fiber rolls shall be removed at the end of construction as directed by the Engineer.

#### **CLARIFICATION ITEMS**

**CLARIFICATION ITEM 1:** A signed copy of Addendum 1 shall be attached to and submitted with the bid proposal.

**CLARIFICATION ITEM 2:** A Public Works Identifying Number (PWP Number) has been obtained for this Project. The number is DO-2018-175.

#### **ATTACHMENTS**

- Revised Sheets G-1, C-4, R-1, D-2, and D-3
- Revised Bid Schedule, Pages P-2, for Solicitation Documents and Specifications

#### **END OF ADDENDUM**

Name of Firm: \_\_\_\_\_ Date: \_\_\_\_\_

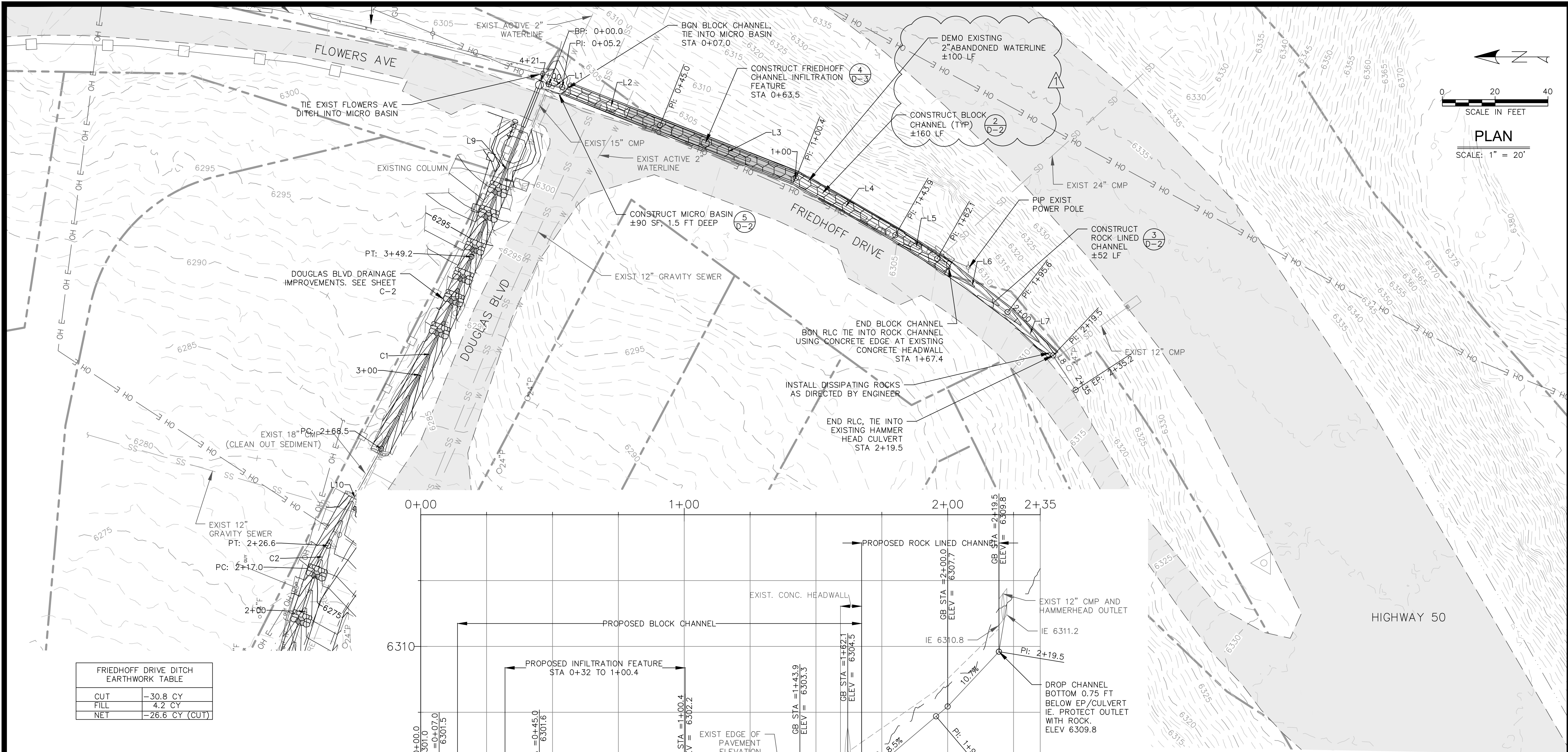
By: \_\_\_\_\_



[illegible]

*G-1*  
4 OF 14

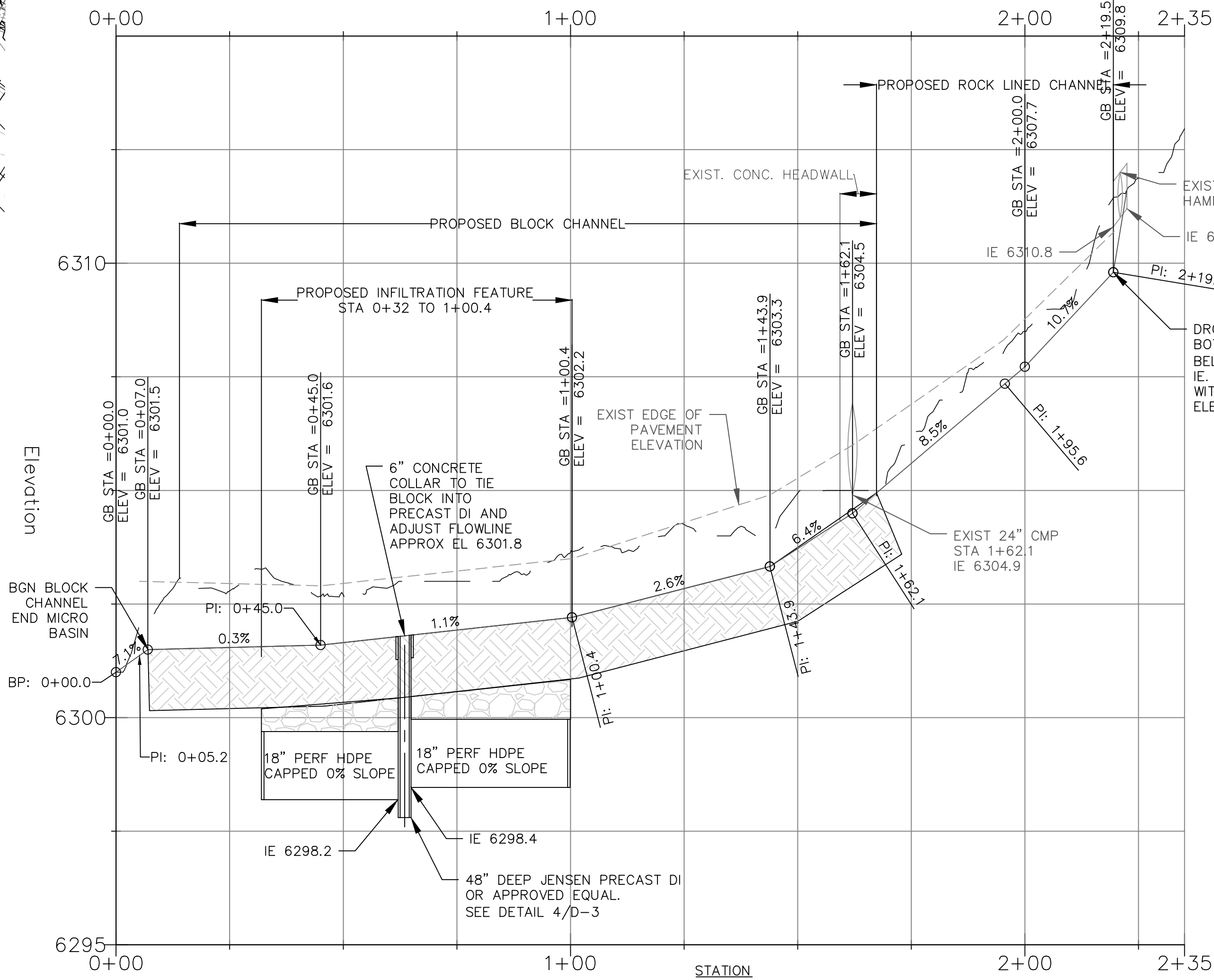




FRIEDHOFF DRIVE DITCH EARTHWORK TABLE	
CUT	-30.8 CY
FILL	4.2 CY
NET	-26.6 CY (CUT)

FRIEDHOFF DRIVE ALIGNMENT

LINE TABLE				
Line #	Length	Direction	Start Point	End Point
L1	5.2	S11° 17' 51"W	(2238056.5, 14691500.6)	(2238055.5, 14691495.6)
L2	39.9	S21° 26' 49"W	(2238055.5, 14691495.6)	(2238040.9, 14691458.5)
L3	55.3	S21° 14' 19"W	(2238040.9, 14691458.5)	(2238020.9, 14691406.9)
L4	43.5	S29° 46' 57"W	(2238020.9, 14691406.9)	(2237999.3, 14691369.1)
L5	18.2	S29° 16' 11"W	(2237999.3, 14691369.1)	(2237970.1, 14691326.6)
L6	33.5	S37° 16' 09"W	(2237970.1, 14691326.6)	(2237940.5, 14691300.7)
L7	23.9	S43° 30' 07"W	(2237940.5, 14691300.7)	(2237910.1, 14691266.6)
L8	15.7	S56° 56' 02"W	(2237910.1, 14691266.6)	(2237880.1, 14691232.6)



FRIEDHOFF AVE PROFILE

SCALE: HORIZ: 1" = 20'; H:V = 1:10

- NOTES:
- ALL UTILITY HORIZONTAL AND VERTICAL LOCATIONS TO BE VERIFIED BY CONTRACTOR PRIOR TO THE START OF CONSTRUCTION. ANY CONFLICTS SHALL BE IMMEDIATELY BROUGHT TO THE ATTENTION OF THE ENGINEER.
  - ROCK LINED AND BLOCK CHANNEL ALONG FRIEDHOFF DRIVE SHALL FOLLOW THE EXISTING EDGE OF PAVEMENT AND BE INSTALLED BELOW THE EDGE OF PAVEMENT AND WITH THE DIMENSIONS PER DETAIL SHEETS. PROFILE ELEVATIONS ARE GIVEN FOR GUIDANCE. ACTUAL INSTALLATION WILL DEPEND ON BEST FIT AND BE INITIALLY STAKED OUT BY NTC.
  - ALL STATION CALL OUTS AND IMPROVEMENTS ARE FOR FRIEDHOFF DRIVE DITCH ALIGNMENT. SEE SHEET C-2 FOR DOUGLAS BLVD ALIGNMENT IMPROVEMENTS.
  - NET CUT TO BE USED IN "COMPACT AND FILL EXISTING DITCH" ADJACENT TO DOUGLAS BLVD. SEE SHEET C-2

Nevada Tahoe  
Conservation District

PROFESSIONAL ENGINEER-STATE OF NEVADA  
MEGHAN C. KELLY  
Exp: 6/30/2019  
CIVIL  
No. 20851

FRIEDHOFF DRIVE DRAINAGE  
PITTMAN TERRACE WATER QUALITY  
IMPROVEMENT PROJECT

REVISIONS		
NO	DATE	DESCRIPTION
1	4/26/18	ADDENDUM 1

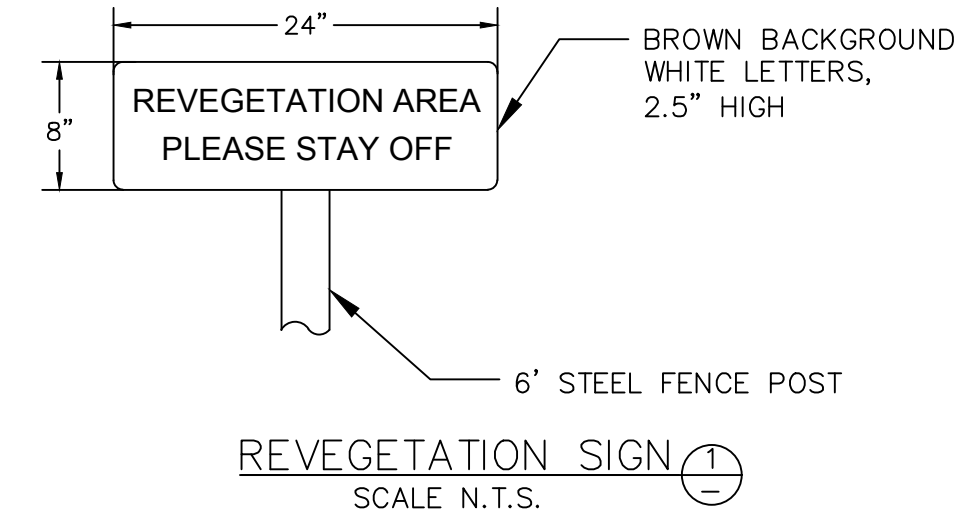
DESIGNED/DRAWN MBG/CFW
CHECKED MCK
DATE 04/2018
SCALE AS SHOWN
PROJECT PT

SHEET

C-4

8 OF 14

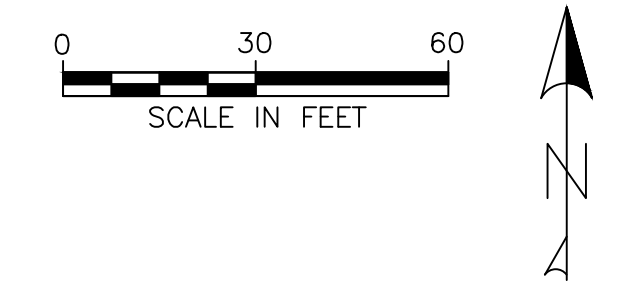




REVEGETATION LEGEND

TREATMENT TYPE 1: UPLAND (±6,150 SF)

- NOTES:
1. SEE SPECIAL PROVISIONS FOR REVEGETATION DETAILS.
  2. CONSTRUCTION AND IRRIGATION WATER MAY BE OBTAINED WITH COORDINATION WITH PRIVATE WATER PURVEYOR (VANCE AND RORY KEENEY). A HOSE BIB AND METER WOULD NEED TO BE INSTALLED AT SHOWN JUNCTION POINT TO ACCESS WATER. ALL WATER LINE WORK TO BE COMPLETED BY PRIVATE WATER PURVEYOR.
  3. IRRIGATION IS ONLY REQUIRED FOR WORK ALONG DOUGLAS BLVD.

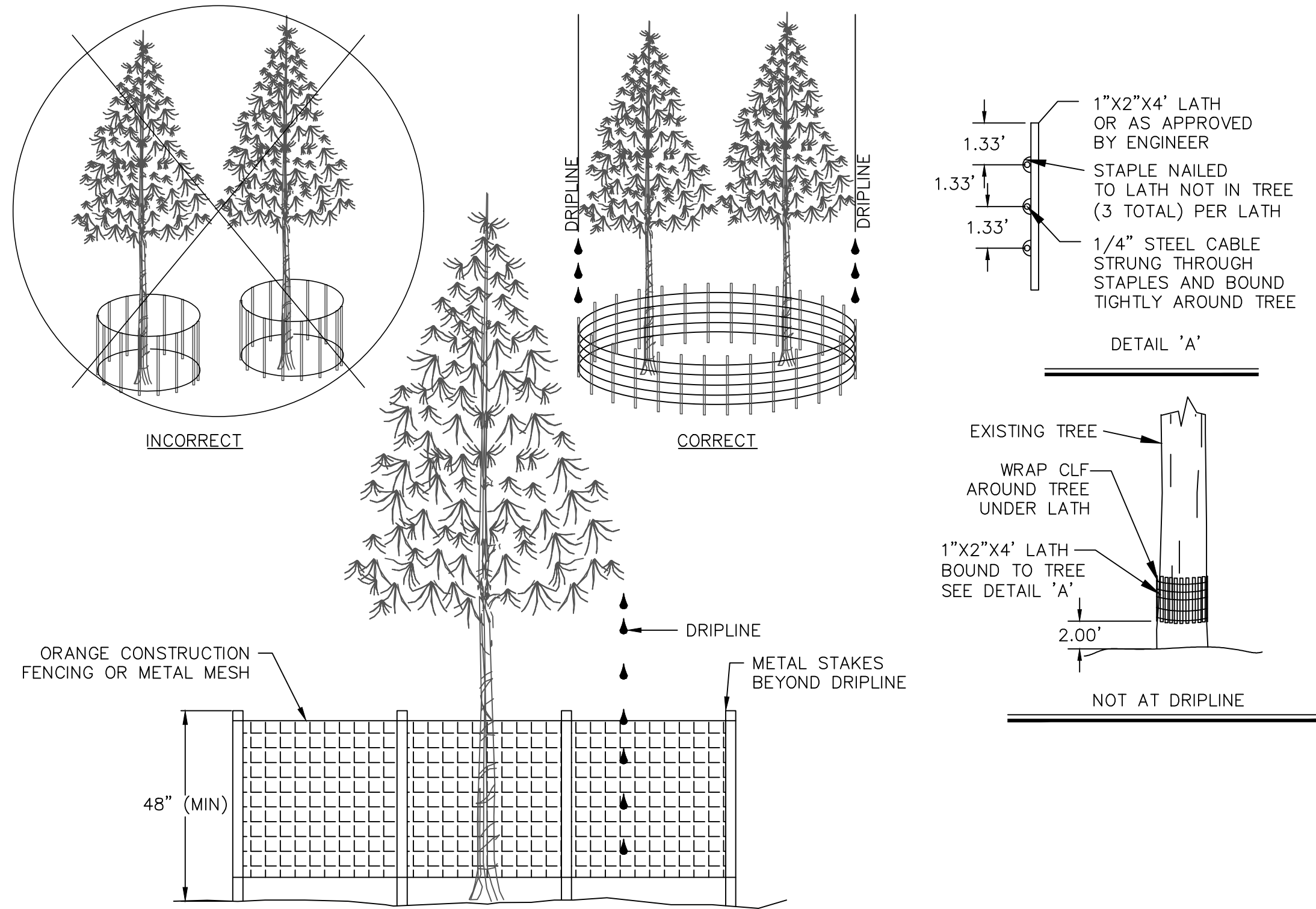


REVEGETATION PLAN  
PITTMAN TERRACE WATER QUALITY  
IMPROVEMENT PROJECT

REVISIONS		
NO	DATE	DESCRIPTION
1	4/26/18	ADDENDUM 1

DESIGNED/DRAWN
MBG/CFW
CHECKED
MCK
DATE
04/2018
SCALE
AS SHOWN
PROJECT
PT



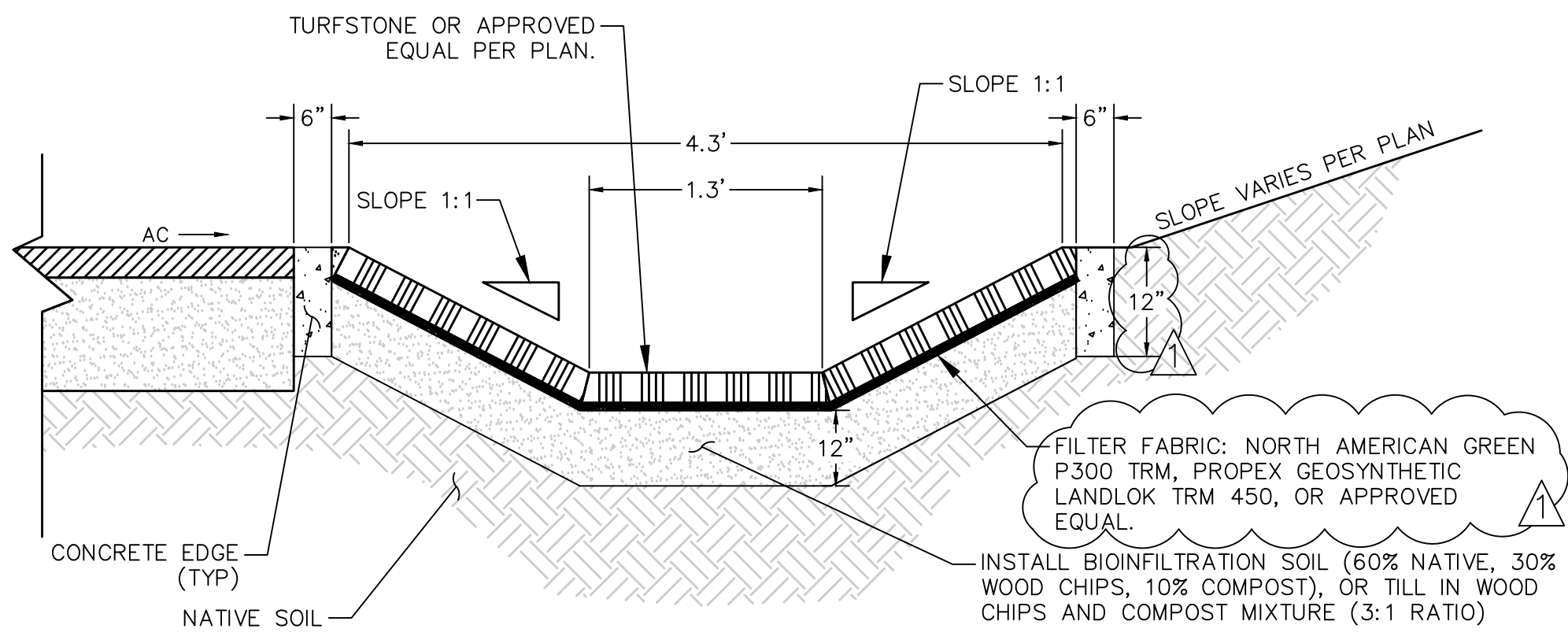


- CLF AND TREE PROTECTION NOTES:**
- DO NOT PERMIT PERSONNEL, CONSTRUCTION MATERIALS, OR EQUIPMENT, TEMPORARY OR OTHERWISE, WITHIN PROTECTIVE FENCING.
  - VEGETATION PROTECTION IS REQUIRED FOR ALL PROJECTS AS A CONDITION OF PROJECT APPROVAL.
  - METAL OR WIRE MESH MAY BE REQUIRED.
  - CALCULATE THE PROTECTIVE PERIMETER FOR SHIELDING LARGER SPECIMEN TREES MEASURING OVER 30" DBH AS FOLLOWS: COMPUTE THE PROTECTIVE RADIUS BY ADDING ONE FOOT, AS MEASURED OUT FROM THE TREE BOLE, FOR EVERY INCH IN DBH. (E.G. A TREE WITH A 30" DBH WOULD RECEIVE A 30' PROTECTIVE PERIMETER)
  - CLF AND TREE PROTECTION FENCE SHALL BE A MINIMUM OF 48" HIGH. FOR TREES WITH DRIPLINES THAT OVERHANG THE CONSTRUCTION AREAS, THE LOCATION OF THE TREE PROTECTION FENCE SHALL BE DETERMINED IN THE FIELD BY THE ENGINEER AND/OR THE TRPA AT THE PREGRADE MEETING.
  - THE DETAIL SHOWN IS FOR TREE PROTECTION. MATERIAL AND SPACING SHOWN ALSO APPLIES TO CLF.
  - QUANTITY OF FILTER FENCE AND CONSTRUCTION LIMIT FENCE DOES NOT INCLUDE MINIMUM LIMITS FOR TREE PROTECTION. TREE PROTECTION FENCING TO BE PER DETAIL THIS SHEET AND/OR AS DETERMINED IN THE FIELD.

### CONSTRUCTION LIMIT AND TREE PROTECTION FENCING

SCALE: N.T.S.

1  
D-2



- BLOCK CHANNEL NOTES:**
- SEE REVEGETATION PLAN AND SPECIAL PROVISIONS FOR REVEGETATION DETAILS. BLOCKS TO BE FILLED 70% WITH TOPSOIL AND SEEDED PER SPECIAL PROVISIONS.
  - SAWCUT PAVEMENT ON FRIEDHOFF DRIVE TO CREATE SMOOTH TRANSITION BETWEEN ROAD AND CHANNEL. SEE STREET CUT REPAIR DETAIL 1/D-4.
  - CONCRETE EDGE TO BE INSTALLED ON UPSTREAM AND DOWNSTREAM EDGE OF BLOCK CHANNEL AS WELL AS ALONG THE SIDES OF THE CHANNEL AS SHOWN..

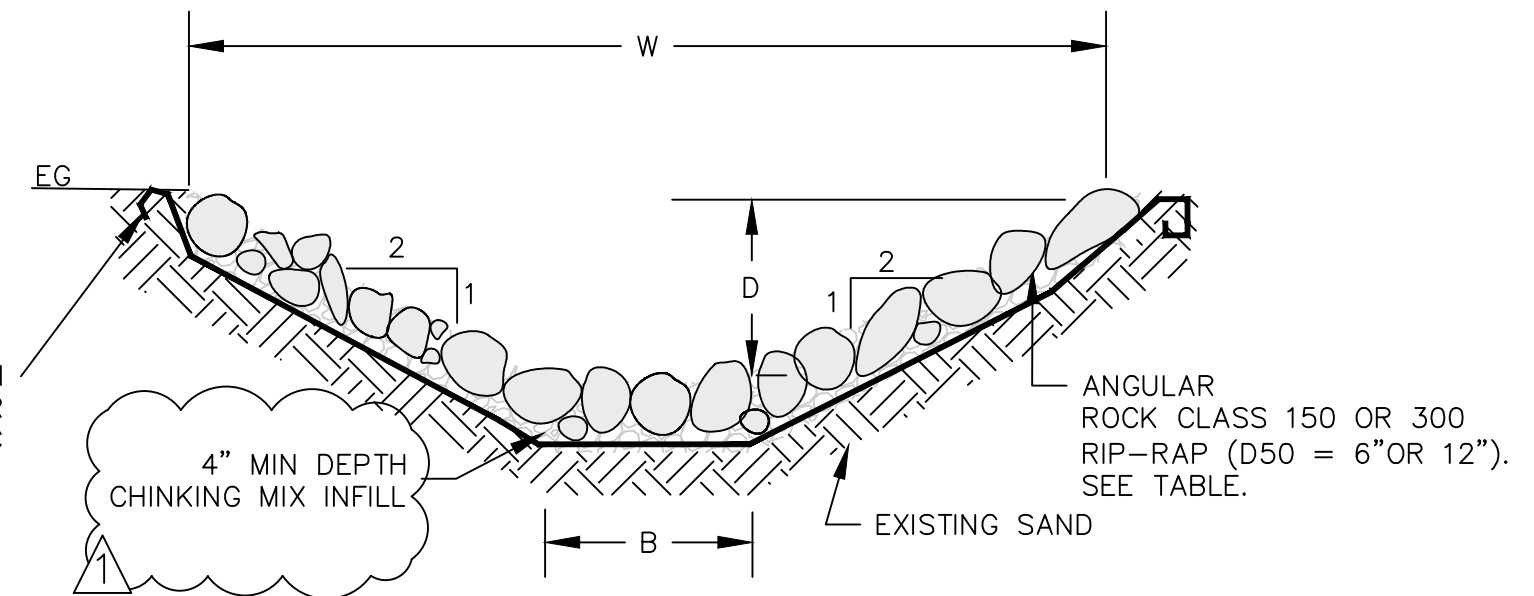
### BLOCK CHANNEL

SCALE: N.T.S.

2  
D-2

ROCK LINED CHANNEL TABLE						
ALIGNMENT NAME	BGN STATION [FT]	END STATION [FT]	W [FT]	B [FT]	D[FT]	RIP RAP CLASS
FRIEDHOFF DR.	1+67.4	2+19.5	3.5	0.5	0.75	CLASS 150
DOUGLAS BLVD.	2+67.9	3+85.2	7.0	1	1.5	CLASS 300
DOUGLAS BLVD.	3+85.2	3+90.6	TRANSITION			CLASS 300
DOUGLAS BLVD.	3+90.6	4+20.3	17.0	5.0	2.0	CLASS 300

- RLC NOTES:**
- REVEGETATION IN ROCK LINED CHANNEL BY OTHERS.
  - SAWCUT PAVEMENT ON FRIEDHOFF DRIVE TO CREATE SMOOTH TRANSITION BETWEEN ROAD AND CHANNEL. SEE STREET CUT REPAIR DETAIL 1/D-4.
  - FILTER FABRIC SHALL BE NORTH AMERICAN GREEN P300 TRM, PROPEX GEOSYNTHETIC LANDLOK TRM 450, OR APPROVED EQUAL.

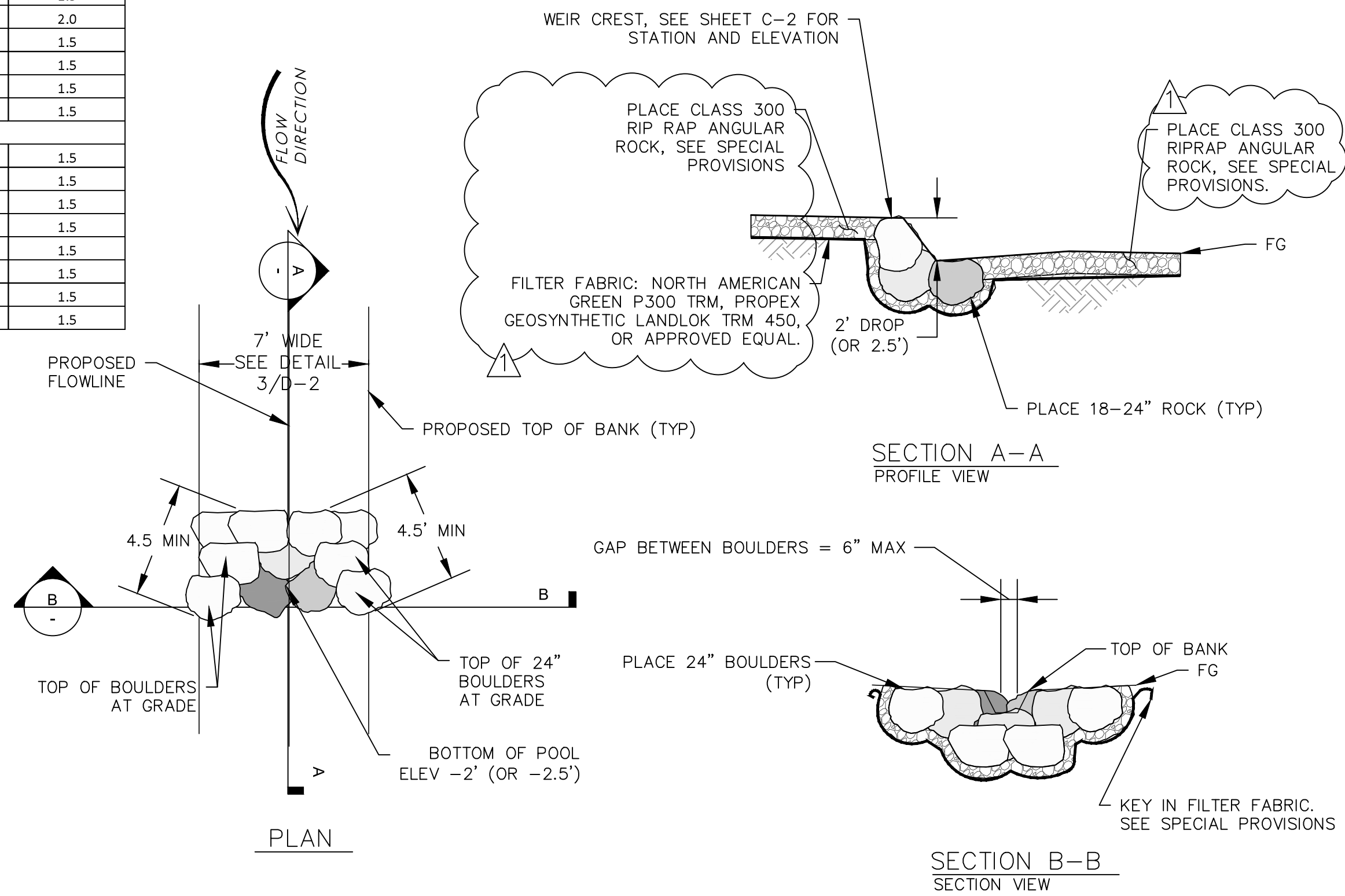


### ROCK LINED CHANNEL

SCALE: N.T.S.

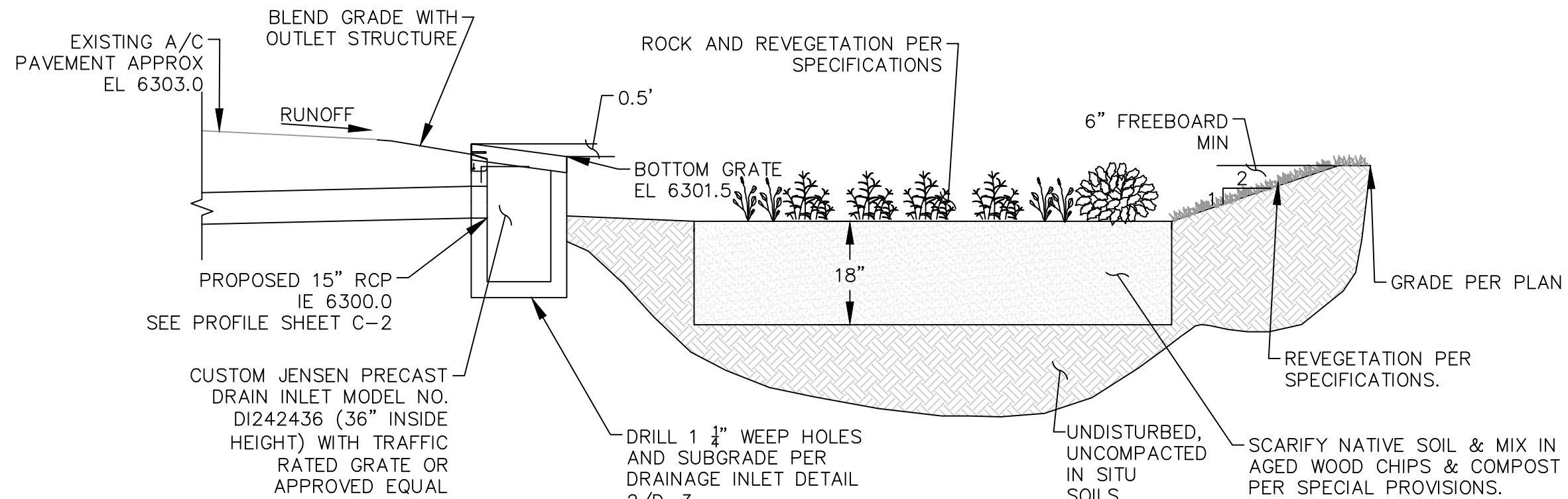
3  
D-2

ROCK DROP STRUCTURE TABLE				
CREST STATION [FT]	CREST ELEVATION [FT]	POOL LENGTH [FT]	INITIAL POOL DROP [FT]	OVERALL DROP [FT]
3+79.0	6298.0	8.0	2.0	1.5
3+69.0	6296.3	8.0	2.5	2.0
3+55.6	6293.5	8.0	2.0	1.5
3+43.4	6291.5	8.0	2.0	1.5
3+33.7	6289.7	10.0	2.0	1.5
3+20.7	6287.8	10.0	2.0	1.5
STA 2+67.9 THRU 2+47.0: CULVERT				
2+17.0	6275.6	8.0	2.0	1.5
1+99.1	6272.7	10.0	2.0	1.5
1+76.6	6269.4	8.0	2.0	1.5
1+58.7	6266.5	10.0	2.0	1.5
1+42.0	6264.4	10.0	2.0	1.5
1+20.6	6262.1	8.0	2.0	1.5
0+94.7	6258.1	10.0	2.0	1.5
0+70.7	6254.6	10.0	2.0	1.5



### ROCK DROP STRUCTURE

4  
D-2



### MICRO BASIN

SCALE: N.T.S.

5  
D-2

REVISIONS		
NO	DATE	DESCRIPTION
1	4/26/18	ADDENDUM 1

DESIGNED/DRAWN MBG/CFW
CHECKED MCK
DATE 04/2018
SCALE AS SHOWN
PROJECT PT
SHEET





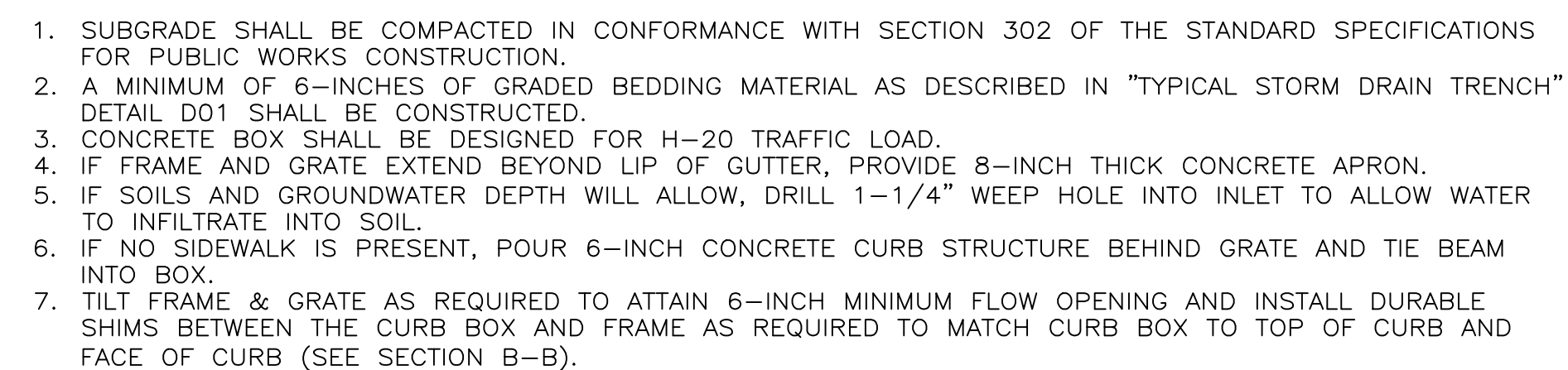
1. THIS DETAIL ONLY REPRESENTS HALF OF THE FEATURE. DOUBLE SEDIMENT TRAPS EXIST ON BOTH SIDED OF THE EXISTING DI. THE 100 FOOT PIPE EXTENSION SHALL BE ON BOTH SIDES OF THE FEATURE.
2. EXISTING PIPE MAY BE REPLACED WITH PERFORATED PIPE INSTEAD OF PERFORATING IN PLACE

1  
D-3

D-3



3  
D-3



2  
D-3

D-3



4  
D-3

1. SEE SHEET C FOR ELEVATIONS
2. GRATE TO MATCH FLOWLINE OF CHANNEL
3. SIDES OF BLOCK CHANNEL WILL BE STEEPER AT GRATE TO MATCH GRATE WIDTH. CUT BLOCK TO FIT WHERE NECESSARY.
4. SUBGRADE SHALL BE COMPACTED IN CONFORMANCE WITH SECTION 302 OF THE STANDARD SPECIFICATIONS FOR PUBLIC WORKS CONSTRUCTION.
5. A MINIMUM OF 6-INCHES OF GRADED BEDDING MATERIAL
6. IF SOILS AND GROUNDWATER DEPTH WILL ALLOW, DRILL 1-1/4" WEEP HOLE AT BOTTOM OF INLET TO ALLOW WATER TO INFILTRATE INTO SOIL.

[illegible]

DESIGNED /DRAWN
MBG/CFW
CHECKED
MCK
DATE
04/2018
SCALE
AS SHOWN
PROJECT
PT



**BID SCHEDULE****PITTMAN TERRACE WATER QUALITY IMPROVEMENT PROJECT**

BID: Pittman Terrace Water Quality Improvement Project construction per bid items. All items not covered by in the Plans, Special Provisions, and Special Technical Provisions but are necessary for completion of the project are incidentals to the listed Bid Items.

Item No.	Quantity	Unit	Item Description	Unit Price	Amount
1	1	LS	Mobilization and Demobilization		
2	1	LS	Temporary Erosion Control		
3	1	LS	Traffic Control		
4	1	LS	Demolition and Existing Infrastructure		
5	1	LS	Clearing and Grubbing		
6	1	LS	Protect Existing Utilities (Electric/Communication, Sewer, Private Water)		
7	16	LF	Install 15" RCP		
8	1	EA	NDOT Type 1 Headwall		
9	100	LF	Remove and Relocate Existing Historic Fencing		
10	1	LS	Micro Basin and Overflow Structure		
11	126.3	CY	Grading Cut		
12	102.9	CY	Grading Fill		
13	22	CY	Fill and Compact Existing Ditch		
14	160	LF	Block Channel		
15	337	LF	Rock Lined Channel		
16	14	EA	Rock Drop Structures		
17	26	LF	Trench Drain & Pavement Patch		
18	1	LS	Friedhoff Infiltration Feature		
19	1	LS	Retrofit NDOT Infiltration System		
20	1	LS	Demo Existing and Install Proposed Pittman Terrace Infiltration Feature		
21	6,150	SF	Revegetation and Irrigation		

BASE BID TOTAL (in numerals) \_\_\_\_\_

BASE BID TOTAL (in words) \_\_\_\_\_